



Rookery Drove, Bury St. Edmunds, IP28 8GG

Rent - £142,500 Deposit -

Shires are proud to present this stunning, brand-new two-bedroom park home, perfectly situated on a beautifully maintained residential site for the over 45s in the sought-after village of Beck Row.

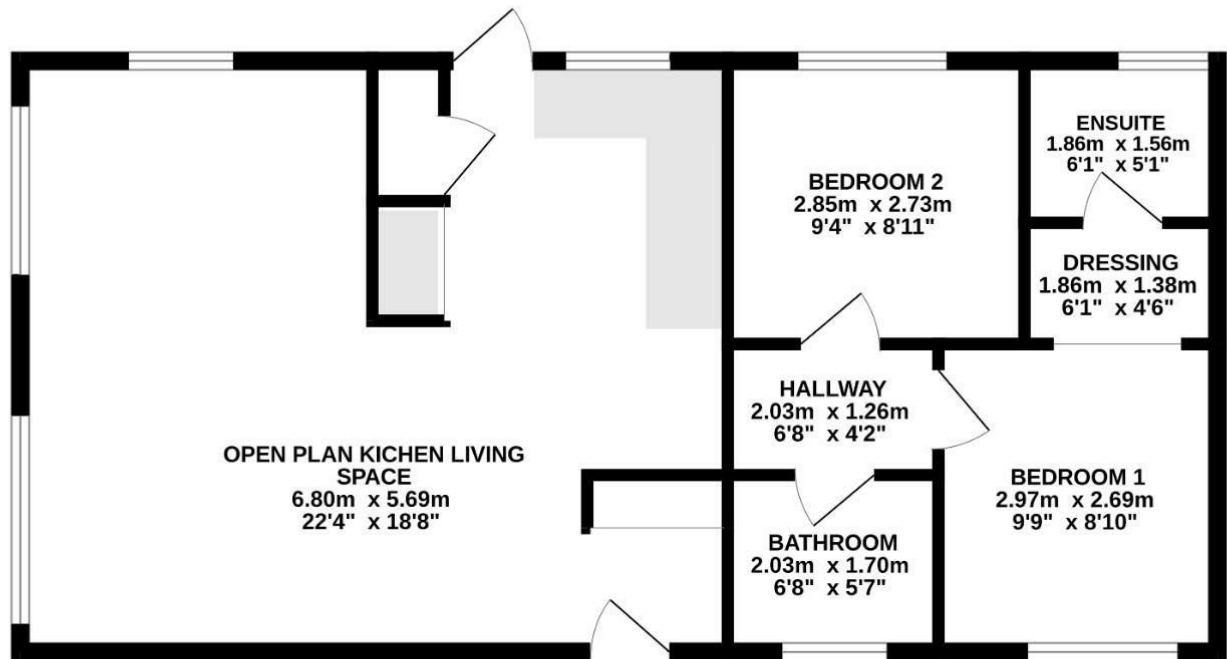
This thoughtfully designed home offers spacious and stylish accommodation throughout, including:

- BRAND NEW PARK HOME
- TILED ROOF WITH 40-YEAR WEATHERPROOF GUARANTEE
- TWO DOUBLE BEDROOMS
- FULLY FURNISHED
- BEAUTIFULLY MAINTAINED RESIDENTIAL PARK
- PROTECTED BY A 10-YEAR GOLD SHIELD STRUCTURAL WARRENTY
- OPEN PLAN LIVING
- INTEGRATED APPLIANCES
- 40X20 SQUARE FEET
- CONTACT US TODAY



Council Tax Band: A - EPC Rating: null

GROUND FLOOR 65.6 sq.m. (706 sq.ft.) approx.



TOTAL FLOOR AREA : 65.6 sq.m. (706 sq.ft.) approx.

Whilst every attempt has been made to ensure the accuracy of the floorplan contained here, measurements of doors, windows, rooms and any other items are approximate and no responsibility is taken for any error, omission or mis-statement. This plan is for illustrative purposes only and should be used as such by any prospective purchaser. The services, systems and appliances shown have not been tested and no guarantee as to their operability or efficiency can be given.
Made with Metropix ©2025

